

TOTAL EQUIPMENT SERVICES INC.

WE KEEP YOUR MINE MOVING

Website: TESInc.ca

Email: info@tesinc.ca

Address: 3695 Ford Drive, Chelmsford ON, P0M 1L0



TABLE OF CONTENTS

PRESIDENTS NOTE	3
ABOUT TES INC.	4
MANUFACTURING SPARTA	10
MINING EQUIPMENT REBUILDS	19
DISTRIBUTION OF EQUIPMENT AND PARTS	24
MINING SERVICE PROVIDERS	28
SAFETY FIRST	37
CONTACT	39

PRESIDENTS NOTE

TOTAL EQUIPMENT SERVICES INC. (TES INC.)



Kevin Whynott

President, Total Equipment Services Inc.

Since our founding in 2005, Total Equipment Services Inc. has committed itself to providing quality products and services that meet the customer's needs based on our mission to "Keep Your Mine Moving".

With each opportunity we face a unique set of intricate challenges. Still, success of our business originates with our strength in understanding the markets we serve and working closely with our customers.

We utilize our expertise in advanced materials, product design, rebuilds, and lean manufacturing to deliver customized, highly engineered solutions. Proving that we can conquer the most demanding industry and technical hurdles imaginable.

Having operated for decades in the mining industry, working with vast networks of companies, we deeply understand the need for partners who share our aspirations for quality, safety, and innovation.



ABOUT TES INC.

WE ARE DEEPLY COMMITTED TO THE MINING COMMUNITY

ABOUT THE COMPANY

Total Equipment Services Inc. is a privately owned Canadian mining supply company located in Greater Sudbury, Ontario, who specializes in the distributing, servicing, rebuilding, and manufacturing of mining equipment.

We have continued to grow steadily and aggressively because of our ability to service a diverse assortment of customer needs.

“

At TES Inc. we pride ourselves in supplying our customers with dependable product and services that keep their mine moving.



TIMELINE

Company growth and brand development timeline

01

2005 / Total Electrical Services

In 2005, Total Electrical Systems Inc. opened as an Electrical Contractor in the Sudbury basin to service the local industry. We manufactured MPCs, PLC panels, MCC units and load break switches. We also provided surface and underground Electrical Installations as per customer specifications.

02

2009 / Total Equipment Services

Total Equipment Services Inc. opened in 2009 to satisfy a growing demand in the industry for mining equipment. TES offered services such as complete remanufacturing of all mining equipment, complete service contracts for maintenance and repairs, either onsite or at our facility. TES was also the distributor for mining equipment including BTI.

03

2018 / SPARTA Utility Vehicles

In 2018 Total Equipment Services Inc. officially announced SPARTA, there new customizable line of utility vehicles, that was engineered for underground mining. SPARTA goes through extensive development and has incorporated feedback from engineers, operators, and mine managers.



WHY CHOOSE US

R

Work with TES Inc. and experience how we “**RISE**” above the competition, with our commitment to building safe, healthy, positive, and productive environments for our people, and our customer’s people.

RELATIONSHIPS: We value relationships and work co-cooperatively across all organizations, to achieve mutually beneficial goals. This means collaborating with others, maintaining a positive can-do attitude, and soliciting and accepting feedback.

I

INTEGRITY: We aim to behave in an honest and ethical manner, holding ourselves accountable for our areas of responsibility. We treat others, including fellow employees, our customers and suppliers with integrity and respect deserving of a member of the TES Inc. family.

S

SERVICE: We strive to provide quality products and services that respond to the changing needs of the mining industry, and the customers we serve. This means focusing our efforts on understanding the unique needs of each customer and customizing our offerings to best align with those needs.

E

ENGAGE: We are dedicated to the mining industry and we aim to be a proactive, responsive, and collaborative partner in our local mining community. We also recognize that we are connected to and working with many mining communities outside of our local boundaries.

OUR CORE OFFERINGS

Our product and service offerings can be categorized into four main segments.



SPARTA UTILITY VEHICLES

The SPARTA line of underground utility vehicles, are built to the standards and specs that operators told us they need. Our entire fleet is supported by an experienced team, available for maintenance and repairs to ensure we keep your mine moving.



REBUILDERS OF ALL MINING EQUIPMENT

At TES Inc. we understand that sometimes budgets are tight, and new isn't always in the cards. Whether the equipment is already owned by you, or you need us to source it, you can trust TES Inc. to keep your mine moving with our quality repair and rebuild services.



DISTRIBUTORS OF EQUIPMENT & PARTS

TES Inc. distributes a wide range of mining equipment and parts. If we don't have your desired equipment or part in our shop, then we will source and locate what you need. At TES Inc. we have the supply network to keep your mine moving.



ELECTRICAL & MECHANICAL SERVICES

TES Inc. is an established electrical and mechanical services contractor that has grown into an all mine services provider with safe, productive and cost-orientated services.

OUR PARTNERS

Over the years we have grown our mining supply business by building strong partnerships with our clients, listening to their needs, and developing productive and reliable products and services. We have placed a special emphasis on the safety and efficiency of workers and a commitment to continuous improvement. Our mining partners trust us to solve many of their production challenges, and they stay with us year after year, because we are truly invested in keeping their mine moving.





SPARTA UTILITY VEHICLES

WE ARE THE PROUD MANUFACTURERS OF SPARTA



Choosing TES Inc. as your mining supply partner means you are choosing to invest in **quality, reliability, and **safety.** Having worked in the mines ourselves, we understand you need every piece of equipment to be made with the utmost care, to support your production goals, and **keep your mine moving.****

SPARTA

UNDERGROUND UTILITY VEHICLES

TES Inc. is the proud manufacturer of SPARTA, a customizable line of underground utility vehicles, engineered for underground mining. Designed with safety in mind, SPARTA has gone through extensive development and has incorporated feedback from engineers, operators, and mine managers.

SPARTA underground mining equipment can be custom engineered to meet your requirements and specifications.







UBT24000

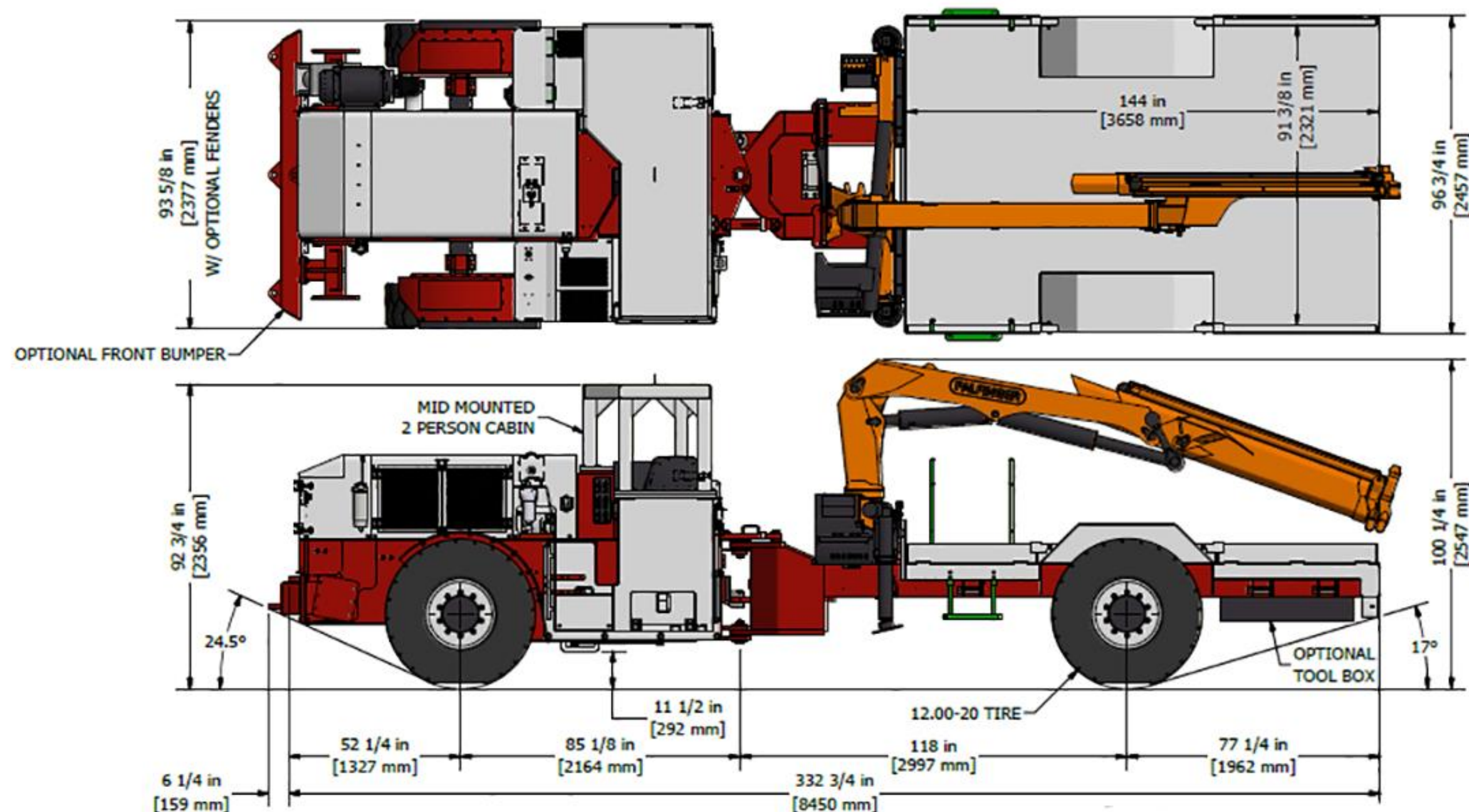
SPARTA UNDERGROUND BOOM TRUCK

Our SPARTA underground boom trucks have been engineered for high mobility, to quickly and easily navigate the challenging and tough to reach terrain of underground mines. The heavy duty solid steel frame, with lifting capacity of 5,620 pounds, and vast payload capabilities will enhance your mines productivity. You're in safe hands with the PALFINGER PK 11001 cranes used on our boom trucks, as they are one of the most economical, reliable and innovative lifting solutions.



SPECIFICATIONS

Crane:	Palfinger PK 11001
Rating:	10.0 m.t. (72,350 l.-lbs)
Lifting Capacity:	2,550 kg (5,620 lbs)
Fully Extended:	1,238 kg (2,730 lbs)
Hydraulic Outreach:	7.8 m (25' 6")
Engine:	Cummins QSB 6.7 Diesel (193 hp), Tier 3 w/Dana 32000
Transmission:	DANA 32000 series
Axles:	DANA 113 SAHR
Deck Dimensions:	2.44 m (96") x 3.66 m (144")
Deck Capacity:	10,866.2 kg (24,000 lbs)
Empty Weight:	11,272 kg (24,850 lbs)
Fire Suppression System:	Certified ANSUL 4 Nozzle, liquid
Tramming Height:	2.54 m (100")
Width/ Length:	2.46 m (97") / 8.45 m (333")
Inside Turning Radius:	5.72 m (225")
Outside Turning Radius:	8.63 m (340")
Tires:	12.00-20



ELECTRICAL

- 24V electrical system
- ABA brake system
- Audio brake system
- Audio back up alarm
- Engine oil pressure switch
- Led lighting installed
- Lock out on master switch
- Strobe light (red, blue, white, amber)
- Wheel chokes and brackets



FRAME UNIT

- Heavy duty construction frame
- Four wheel drive, articulated steer carrier
- ROPS/FOPS canopy
- Spare tire included
- 3 sets of manuals with electronic versions
- Fire extinguisher
- Boom Stabilizer

ADDITIONAL OPTIONS

- Enclosed environmental cab (AC heater system)
- Central lubrication system (Lincoln)
- Radio remote option for boom
- ANSUL "check fire" with detections system
- Tethered remote option for boom
- Hydraulic low level warning light
- Seat belt warning system
- Mercedes 906 diesel engine w/32000 transmission
- Electric fill pump c/w filters
- HIAB boom assembly 009
- Air ride seats (qty 2)
- Wiggins fast fuel system
- Kessler axels 41 series
- Front fenders
- Front bumper



USL5000

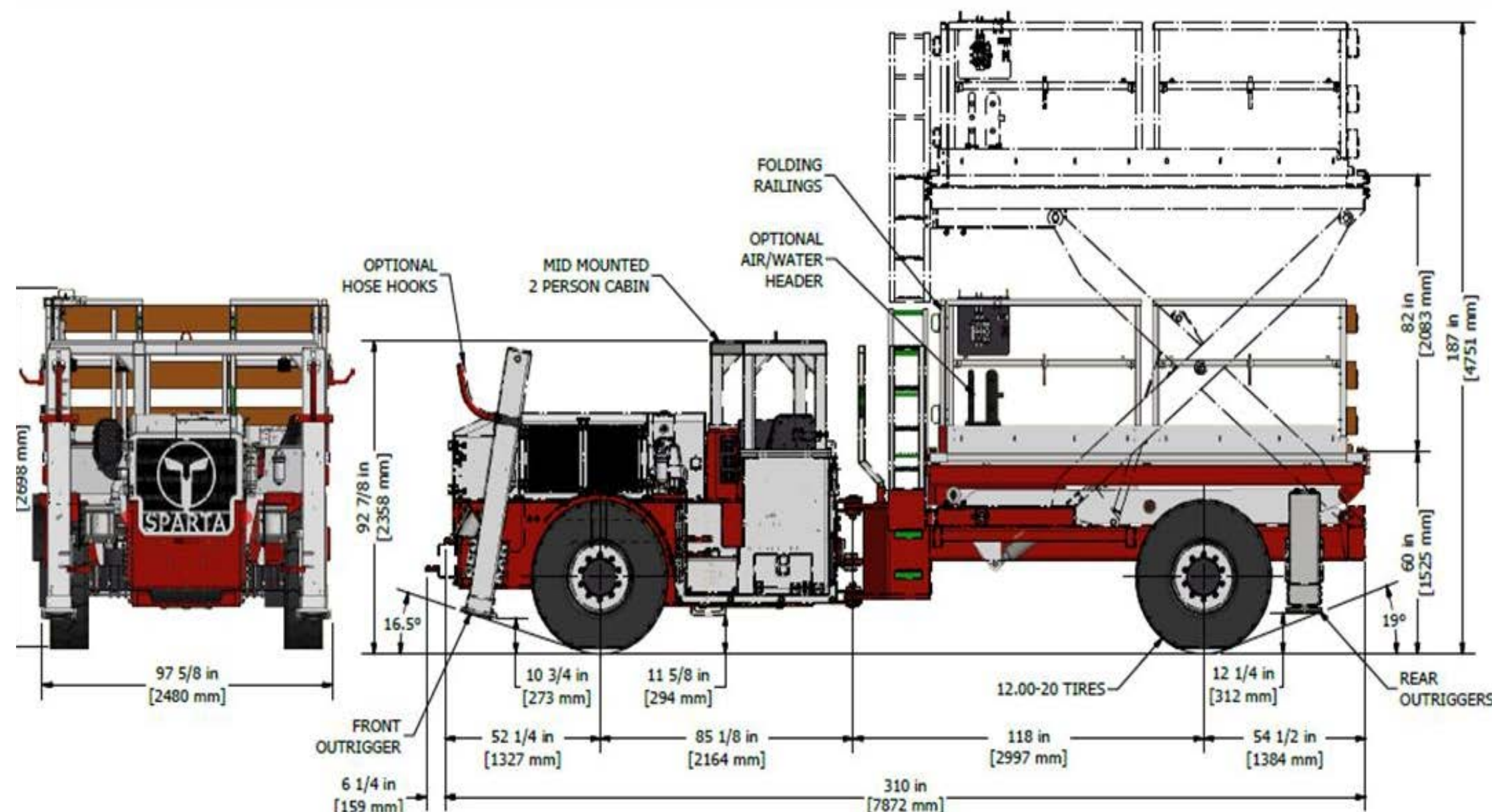
SPARTA UNDERGROUND SCISSOR LIFT

Our SPARTA Scissor Lift trucks are designed for the rugged underground landscape, and can be used in an assortment of mining operations. They are engineered with safety in mind and are vigorously tested to ensure that the elevating platforms and ground supports are versatile and stable during operation. All of our SPARTA Scissor Lifts are built in-house by TES Inc. and provide a safe and sturdy surface that workers can trust.



SPECIFICATIONS

Engine:	Cummins QSB 4.5 Diesel (130 hp), Tier 33 w/ Dana 20000
Transmission:	DANA 20000 series
Axles:	DANA 113 S4HR
Deck Dimensions:	2.44 m x 3.66 m (96" x 144")
Side Shift:	0.6 m (24")
Deck Capacity:	2268 kg (5,000 lbs)
Empty Weight:	16,347 kg (36,150 lbs)
Fire Suppression System:	Certified ANSUL 4 Nozzle, liquid
Tramming Height:	2.67 m (106")
Width/ Length:	2.46 m (97") / 7.87 m (310")
Inside Turning Radius:	5.72 m (225")
Outside Turning Radius:	8.63 m (340")
Tires:	12.00-20



ELECTRICAL

- 24V electrical system
- ABA brake system
- Audio brake system
- Audio back up alarm
- Engine oil pressure switch
- Led lighting installed
- Lock out on master switch
- Strobe light (red, blue, white, amber)

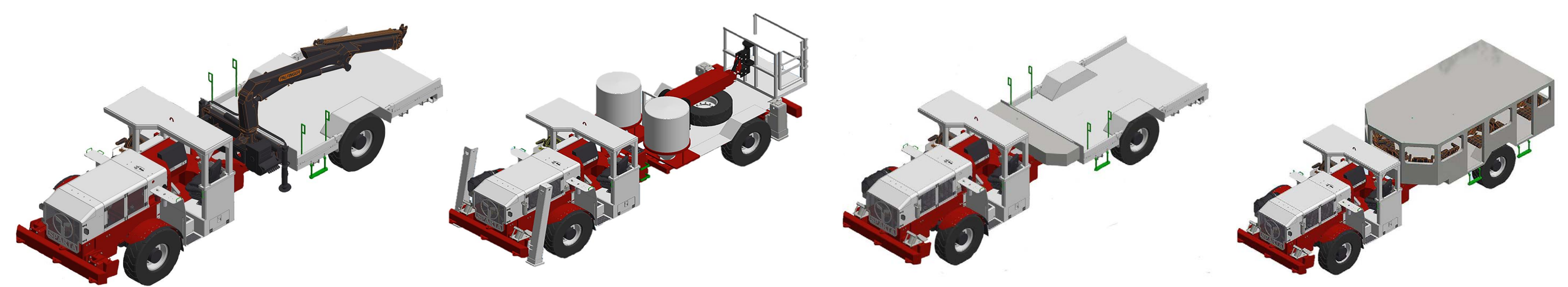


FRAME UNIT

- Heavy duty construction frame
- Four wheel drive, articulated steer carrier
- ROPS/FOPS canopy
- Spare tire included
- 3 sets of manuals with electronic versions
- Fire extinguisher

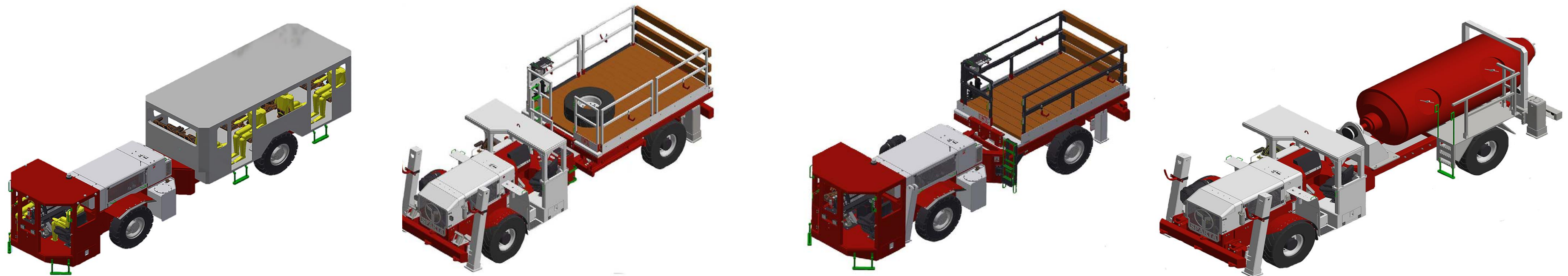
ADDITIONAL OPTIONS

- Enclosed environmental cab (AC heater system)
- Central lubrication system (Lincoln)
- ANSUL "check fire" with detections system
- Air power pack 24V auxiliary lighting
- Air driven auxiliary lighting
- Air driven auxiliary hydraulic power pack
- Exhaust shielding options (Firwin/Mammoth)
- Mercedes 904 diesel engine w/20000 transmission
- Electric fill pump c/w filters
- Hydraulic low level warning light
- 3000W 120V power inverter
- Seat belt warning system
- Magnetic deck work lights
- Wiggins fast fuel system
- Hose reels for air/water
- Magnetic deck work lights
- Front fenders
- Front bumper
- Foam filled tires
- Solid tires
- Air ride seats (qty 2)
- Air water manifold
- Fold down deck railings
- Seat belt warning system



SPARTA PORTFOLIO

To view specs on our complete line of
SPARTA utility vehicles, visit our website
www.tesinc.ca

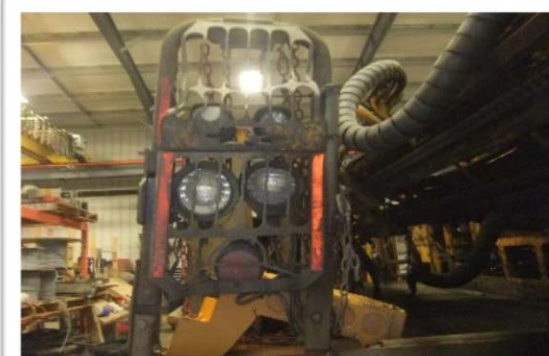
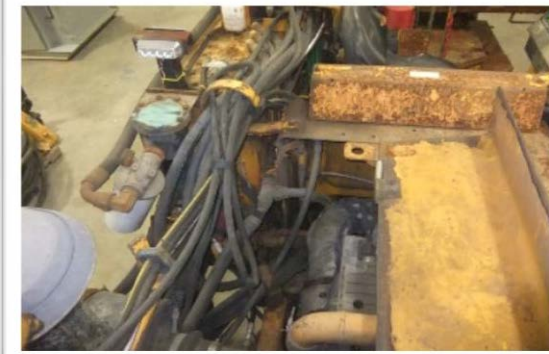
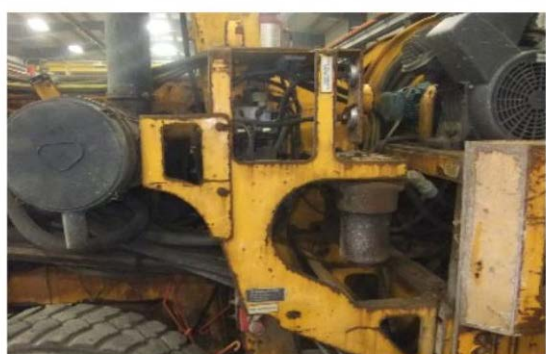
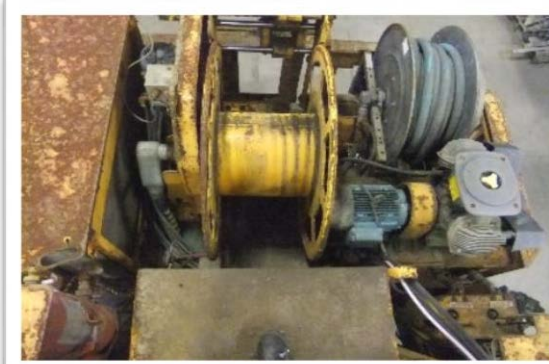
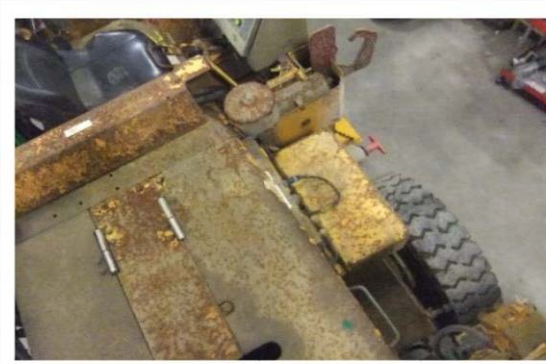
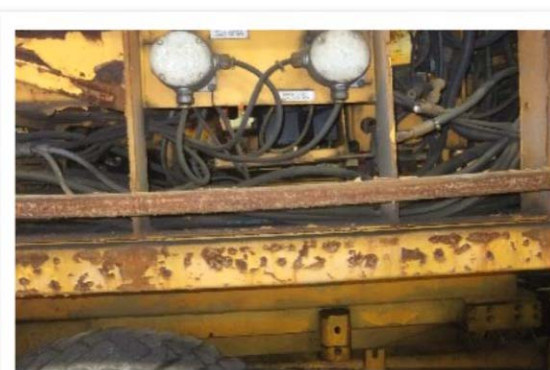




REBUILDS

TRUSTED MINING EQUIPMENT REBUILDERS

REFURBISHED MINING EQUIPMENT



REBUILDS OF ALL MAJOR MINING EQUIPMENT

TES Inc. rebuild units have logged thousands of hours and have met or exceeded the clients' expectation. We have a team of experienced managers, supervisors, sub-trades and personnel that are trained, and readily available to participate in all requirements for the rebuilds.

We strive to provide quality customer service that responds to the changing needs of the customers we serve. We focus our efforts on understanding and satisfying our customers' needs and delivering value in a timely and courteous manner.

Rebuild equipment is fully audited before it goes through the rebuild process, updating and upgrading where needed to fulfill equipment performance. At TES Inc. this is done to the highest quality standards, so that we can keep your mine moving.





BEFORE



AFTER





Complete Refurbished Boom Truck

Included all
welding/fabrication,
electrical, power train



Complete Refurbished MacLean Bolter

Included all
welding/fabrication,
electrical, power train



Complete Refurbished MT444 Haulage Truck

Included all
welding/fabrication,
electrical, power train

A red backhoe loader is the central focus of the image, parked on a paved surface in a desert environment. The machine features large, treaded tires and a prominent rear-mounted backhoe arm. The brand name 'XTREME' and model 'XR2034' are clearly visible on the side of the machine. The background shows a vast, arid landscape with distant mountains under a clear sky. A semi-transparent red overlay covers the entire image, serving as a background for the text.

DISTRIBUTORS

DISTRIBUTORS OF MINING EQUIPMENTS AND PARTS

XTREME MINE TELEHANDLERS

Xtreme Manufacturing builds the largest range of heavy duty and high capacity telehandlers in North America. They are engineered to outlast and outperform anything else in the industry — period. In fact, they set the standard for safety, productivity and reliability. We understand that down-time is the enemy of any mine site. So, Xtreme Mine Telehandlers are designed to be super heavy duty and very low maintenance, greatly reducing down-time and lowering total ownership costs across the life of the machine

But we're not just tough, we're smart, too. Xtreme Mine Telehandlers feature cabs with 360-degree operator visibility, and intuitive controls so operators can keep one hand on the steering wheel at all times. Because safety is as important to us as strength. It's not about meeting industry standards, it's about seeing them. Because we don't do average. And that's what makes us different.





XTREME Mine Telehandler
XMT630



XTREME Mine Telehandler
XMT5919



XTREME Mine Telehandler
XMT5519



XTREME Mine Telehandler
XMT1055



XTREME Mine Telehandler
XMT7038



XTREME Mine Telehandler
XMT842



XTREME Mine Telehandlers
XMT1147



XTREME Mine Telehandler
XMT1245

16
Telehandlers

SNORKEL MINE LIFTS

Snorkel lifts are designed for use on surfaces from slab to rough terrain. Snorkel is a quality machine, supported by superior service, parts and safety training.





Rough Terrain Scissor Lift
SRTL 2770/3370/3970



Self-Propelled Telescopic
Mast Lift STM12



Portable Trailer Boom Lifts
STL37



Electric Boom Lift SEBL38



Mini Scissor Lift SMSL
3006/3008/3010



Speed Level Lift SSL 26/30



MECHANICAL

MECHANICAL AND AFTER SALES SERVICES

TRUSTED MINING SERVICES PROVIDER

We understand that you are driven to deliver the highest production yield, at the lowest cost per ton. And to achieve this you need to minimize machine downtime, in order to lower cost of ownership and total operating costs.

At TES Inc. our reliable service agreements are customized for your unique needs. Whether its hourly onsite repair contracts, or scheduled preventative maintenance packages, we work with you to ensure that you are receiving the support you need to keep machines in operation and meet production goals



TOTAL EQUIPMENT SERVICES INC.

AFTER SALES SERVICES

SCHEDULED SERVICING

- Maximize equipment reliability and productivity
- Effectively monitor the condition of your equipment
- Manage both scheduled and unscheduled maintenance costs
- Reliable access to professionally trained technicians

HOURLY ONSITE REPAIRS

- Minimize the total cost of ownership
- Accurately plan your maintenance budget
- Fixed cost per hour maintenance on equipment
- Reliable access to professionally trained technicians

CRITICAL SPARE PARTS

- Better budgeting and planning capabilities
- Maximize the performance and life cycle of equipment
- Manage outages with timely access to critical parts
- Reliable access to professionally trained technicians

EQUIPMENT REBUILDS

- Reduce capital spend requirements
- Extend the life of equipment
- Minimize total operation cost
- Increase equipment resale value



01

SCHEDULED SERVICING



Avoid the Risk of Equipment Breakdown with Scheduled Servicing

We understand that with the focus on production yield, machine maintenance often gets overlooked. Which is why scheduled servicing is needed, so you can avoid the risk of equipment breakdown.

Scheduled service agreements will help you be proactive and reduce the long term cost of operating your equipment. Ensuring that your machines performance is not compromised or results in a catastrophic fail. Our team of skilled technicians will perform regular audits and offer reliable servicing on time and at competitive a price.

02 HOURLY ONSITE REPAIRS



Manage Your Maintenance Costs with Hourly Onsite Repair Contracts

Not only is it difficult to find qualified maintenance technicians, employing a large and versatile team of technicians can be very costly, and not always yield the ROI you invested. To better manage your maintenance costs you can outsource your maintenance with our hourly onsite repair contract. The benefit is access to the technical expertise you need, when you need it, with a reduction in labour costs and overall operating costs.

Our service teams can work independently, or alongside your mine personnel. While our hourly onsite repair agreements can be applied to our SPARTA line of vehicles, or any other mining vehicle. Our years of rebuilding equipment has equipped us with the expertise to service a large variety of mining equipment brands.

03

CRITICAL SPARE PARTS



Better Predict Maintenance Costs With Critical Spare Parts Packages

It's common knowledge that mining equipment works hard and takes a beating, and it is only a matter of time before components fail. Managing the planned and unplanned outages can minimize the impact on productivity and maximize equipment uptimes.

With our Critical Spare Parts Packages we provide you with the recommended list of parts for purchase, but offer you the flexibility to select only the parts and components that you would like to include. These packages can also be layered with our scheduled servicing agreements, or our hourly onsite repair contracts.

04 EQUIPMENT REBUILDS



Extend the Life of Your Equipment with Our Rebuild Agreements

Due to availability and reduced capital requirements, equipment rebuilds are a cost effective option to extend the life of your machines. TES Inc. will audit the equipment and work with you to define the scope of work needed, including the parts and service requirements. A timeline for the work is then established and TES Inc. will update you regularly on the progress of the rebuild.

Let's face it, when it comes rush orders and mining equipment, it often takes less time to refurbish an existing piece of equipment, or purchase a rebuild.



SERVICES WE PROVIDE

MECHANICAL

- Supply man-power for mechanical maintenance and rebuild of mining equipment.
- Complete audits and pricing on any mobile mining equipment.
- Rebuild program for client's equipment.
- Maintenance system and tracking for clients mining equipment.
- Equipment refurbishing.
- Parts and equipment servicing.
- Mechanical contracting.
- Equipment pickup and delivery.

The background image shows two electrical workers in orange protective suits with reflective stripes. They are in a control room or industrial facility, working on a large, orange, circular electrical component mounted on a stand. The component has a yellow label that reads "DANGER HIGH VOLTAGE". In the background, there are several electrical control panels with red switches and a fire extinguisher on the wall. A yellow pallet jack is visible on the right side of the frame.

ELECTRICAL

ELECTRICAL MANUFACTURING AND INSTALLATIONS

MANUFACTURING & INSTALLATIONS

ELECTRICAL

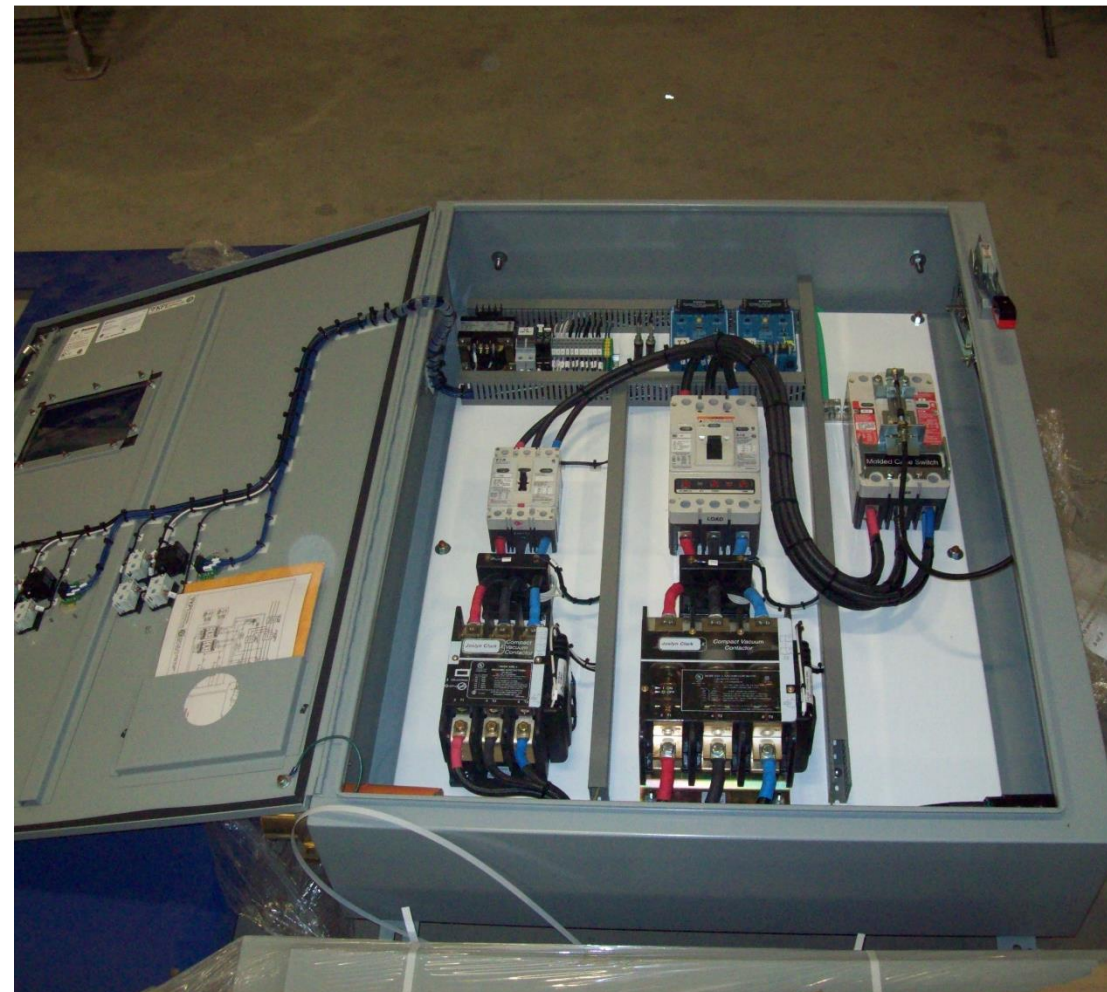
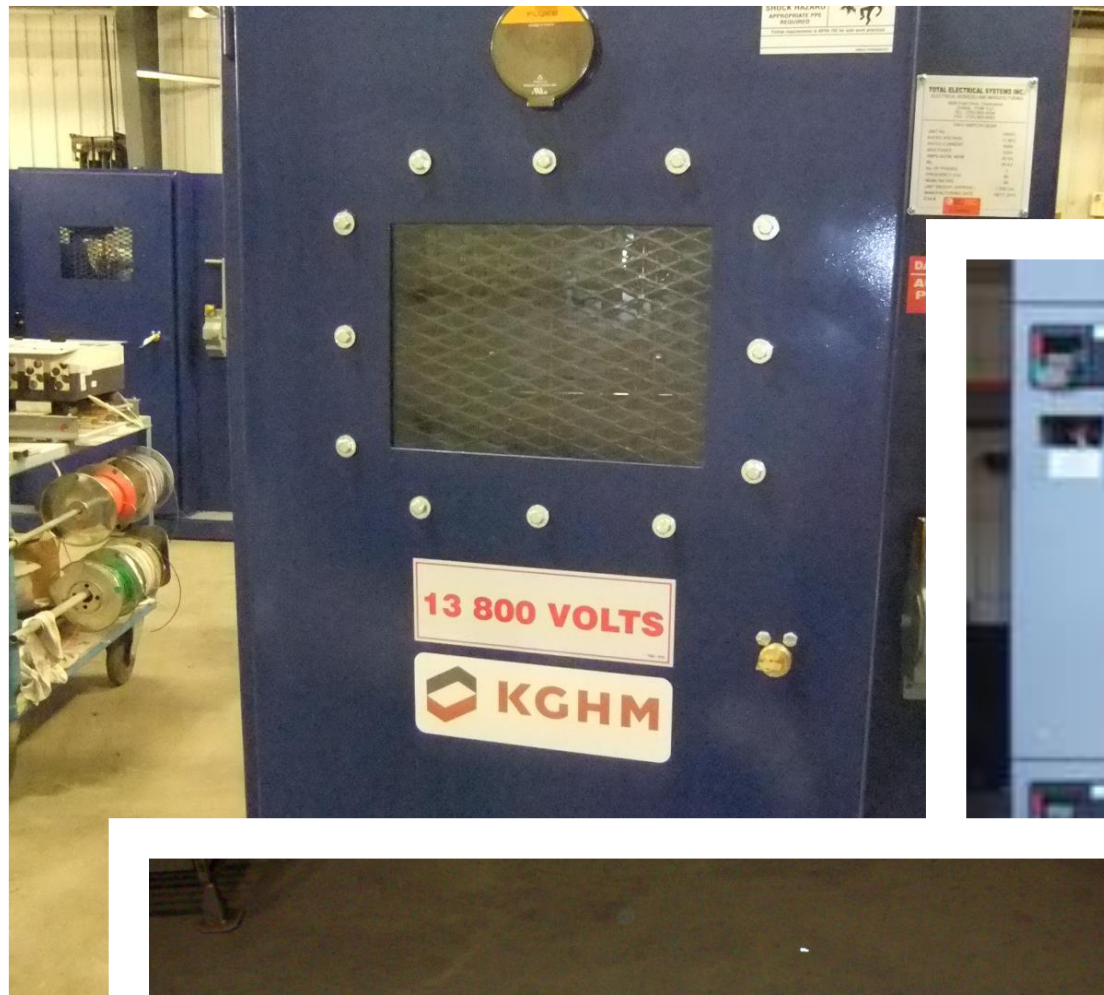
- Mine Power Centre's
- PLC Cabinets and Communications
- Industrial Instrumentation
- Motor Control Centers
- Hoist Upgrading and New Installations
- Shaft Cable Installations
- Portable Power Racks



MANUFACTURING

ELECTRICAL

- Mine Power Centers
- Motor Control Centers
- 5kV and 15kV Switch Gears
- 5kV and 15kV Junction Boxes
- ISO Certified
- Jumbo/Bolter Panels
- Fan and Pump Panels
- PLC and RIO Interfaces





MINE POWER CENTER

ELECTRICAL

- Manufacturer of Mine Power Centers from 300kVA to 2.25 MVA
- 5kV up to 25kV Primary Voltage
- Compact, Portable and Light Weight
- Customizable with Integral Safety Features

SERVICE AND INSTALLATIONS

ELECTRICAL

- Complete Hoist Installations
- Hoist Conversions
- Full Underground and Surface Electrical Service
- Ore Conveyance Systems
- E-House Installations
- Switch Yards
- Industrial Ore Sampling Systems



The background image shows the rear of a red fire truck. A large, semi-transparent red rectangle is overlaid on the center of the image, containing the text. The truck's rear features a large silver mesh grille with the word 'TES' in large, bold, black letters. Below the grille, there are red taillights and reflective safety strips. In the background, a person in a dark uniform is visible, and a blue fire extinguisher is on the right. The scene appears to be in a workshop or garage.

SAFETY

SAFETY IS A FULL TIME JOB NOT A PART TIME PRACTICE

Which is why we employ a number of safety risk alleviation measures including, safety awareness programs, risk identification practices, operating standards, and compliance management procedures.

SAFETY FIRST

At TES Inc., we believe that safety is a full time job, not a part time practice. Which is why we employ a number of safety risk alleviation measures including, safety awareness programs, risk identification practices, operating standards, and compliance management procedures.



ZERO HARM

As with all projects, we strive for a 'Zero Harm' work environment and plan on sending our employee's home safe every day.



SAFE WORKPLACES

Our safety standards ensure that we employ every measure possible to make our work-site and your work-site safe places to be.



REMARKABLE RECORD

We are committed to the safety and welfare of everyone who is affected by our activities. As demonstrated by our remarkable safety record.



CONTACT

Kevin Whynott

Email:

kevin.whynott@tesinc.ca

Tel: 705-855-4254

Fax: 705-855-6683

Address: 3695 Ford Drive Chelmsford, ON P0M 1L0

Website: TESInc.ca

THANK YOU

